

DP Gigabit Ethernet PCIe

Installation Guide

Introduction

The *DP Gigabit Ethernet PCIe* adds Gigabit Ethernet to your system. This adapter supports 10/100/1000 Ethernet, eliminating network bottlenecks.

Features and Benefits

- Adds a high-speed Gigabit Ethernet port to your PCI Express enabled system
- Dual Profile design to work with full height or low profile chassis
- Compliant with 10/100/1000 IEEE 802.3 specification
- Easy installation and installs in any available PCI Express (PCIe) slot
- Supports 10/100/1000 Mbps data rate, auto-negotiation and full duplex

Lot Number Sticker

For future product return or exchange, this lot number is required. Please keep it for your reference.



System Requirements

- PCI Express-enabled system with an available PCI Express slot
- Windows® 10 (32-/64-bit) / 8.x (32-/64-bit) / 7 (32-/64-bit) / Vista (32-/64-bit) / XP (32-/64-bit) / 2000

- Windows Server® 2003 & 2008 (32-/64-bit) / 2008 R2 / 2012 / 2012 R2
- Mac OS X® 10.5.x to 10.9.5

Package Contents

- *DP Gigabit Ethernet PCIe*
- Spare enhanced low profile bracket
- Driver CD and installation guide

Layout

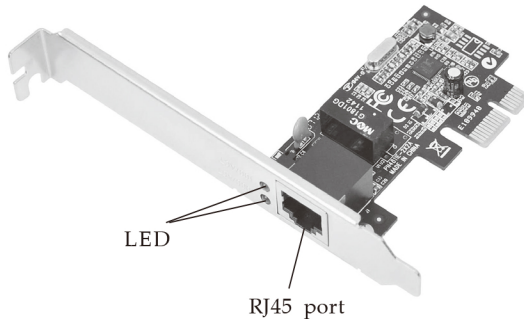


Figure 1. DP Gigabit Ethernet PCIe

LED Indicators

Two LEDs to monitor your network connection are visible through the slot bracket.

- **100/ACT:** 100 Mb/s network connection and network activity
- **1000/ACT:** Gigabit (1000 Mb/s) network connection and network activity

Hardware Installation

Note: For low profile systems, replace the currently mounted bracket with the included low profile bracket.

General instructions for installing the card are provided below. Since the design of computer cases and motherboards vary, refer to your computer's reference manual for further information, if needed.

Static Electricity Discharge may permanently damage your system. Discharge any static electricity build up in your body by touching your computer case for a few seconds. Avoid any contact with internal parts and handle cards only by their external edges.

1. Turn OFF the power to your computer.
2. Unplug the power cord, remove the computer cover.
3. Remove the slot bracket from an available PCI Express slot.
4. Carefully align the card to the selected PCI Express slot, push the board down until it is well seated.
5. Replace the slot bracket holding screw to secure the card, then replace the computer cover and reconnect the power cord.

Windows Driver Installation

Windows 10 / 8.x / 7 (32-/64-bit) / Server 2008 R2 / Server 2012 / Server 2012 R2

1. Install the board and boot up Windows.
2. Insert the driver CD. Close the CD autoplay box if prompted.
3. Click **Windows** key and **R**.

For Windows 10: Type **D:\Windows\Win 10\setup.exe**, click **OK**.

For Windows 8.x / Server 2012 / Server 2012 R2:
Type **D:\Windows\Win 8_8.1_Server 2012R2\setup.exe**, click **OK**. (Change **D:** to match your CD\DVD-ROM drive letter)

For Windows 7 / Server 2008 R2: Type **D:\Windows\Win 7_Server 2008R2\setup.exe**, click **OK**. (Change **D:** to match your CD\DVD ROM drive letter)

4. At the **User Account Control**, click **Yes**. For Server 2008 R2, 2012 and 2012 R2 skip this step.
5. At **Welcome**, click **Next**.
6. At **Ready to install the program**, click **Install**. For Server 2008 R2, skip this step.
7. Please wait while the driver install process continues.
8. Click **Finish** to complete the installation.

Windows Vista (32-/64-bit) / Server 2008 (32-/64-bit)

1. Install the board and boot up Windows.
2. Insert the driver CD. Close the CD autoplay box if prompted.
3. Click **Start, Run**, type **D:\Windows\Vista_Server 2008\setup.exe**, then click **OK**. Or at the Start search box, type **D:\Windows\Vista_Server 2008\setup.exe**, then press **Enter**. (Change **D:** to match your CD\DVD- ROM drive letter)
4. At the **User Account Control**, click **Continue**. For Server 2008, skip this step.
5. Click **Next**.
6. Click **Install**. Skip this step if not prompted.
7. Please wait while the driver install process continues.
8. Click **Finish** to complete the installation.

Windows XP (32-/64-bit) / Server 2003 (32-/64-bit) / 2000

1. Install the board and boot up Windows.

2. Insert the driver CD.
3. Click **Start**, **Run**, type **D:\Windows\Win2K_XP_2003\setup.exe**, click **OK**. (Change **D:** to match your CD\DVD- ROM drive letter)
4. At **Welcome**, click **Next**, then click **Install**.
5. Click **Finish** to complete the installation.

To Verify Windows Installation


1. Go to Device Manager to verify installation.
For Windows 10 / 8.x / 7 / XP / Server 2003 & 2008R2 / 2000: Right click **This PC**, **Computer** or **My computer**, click **Manage**, then click **Device Manager**.
For Windows Vista: Right click **Computer**, click **Manage**, click **Continue**, then click **Device Manager**.
For Windows Server 2008: Right click **Computer**, click **Manage**, double click **Diagnostics**, then click **Device Manager**.
For Windows Server 2012 and 2012 R2: Right click **Computer** or **This PC**, click **Properties**, then click **Device Manager**
2. Double click **Network adapters**, either **Realtek PCIe GBE Family Controller** or **Realtek RTL... PCI-E Family Gigabit Ethernet...** should be displayed.

Mac OS Installation

1. Install the board and boot up the computer.
2. Insert the driver CD. Double click the **MAC OS X** folder, then double click **10.5.x**, **10.6.x** or **10.7.x** folder. **Note:** use the 10.7.x folder for 10.8 and 10.9.
3. Double click **RTGNICv2.0.6.mpkg**.
4. At **Introduction**, click **Continue**.
5. At **Read Me**, click **Continue**.

6. At **License**, click **Continue**, then click **Agree**.
7. At **Installation Type**, click **Change Install Location** if you want to change the default saving folder; otherwise, click **Install**.
8. Type in **Name** and **Password**, click **OK** or **Install Software**, then click **Continue Installation**.
9. At **Summary**, click **Restart** to restart the computer.

To Verify Mac OS Installation

1. Go to , **System Preference**, then click **Network**.
2. At **New Interface Detected**, click **OK**. Skip this step if not prompted.
3. If the driver is successfully installed, the bullet before **PCI Ethernet...** should be green, see **Figure 2**.

Green bullet stands for successful driver installation.

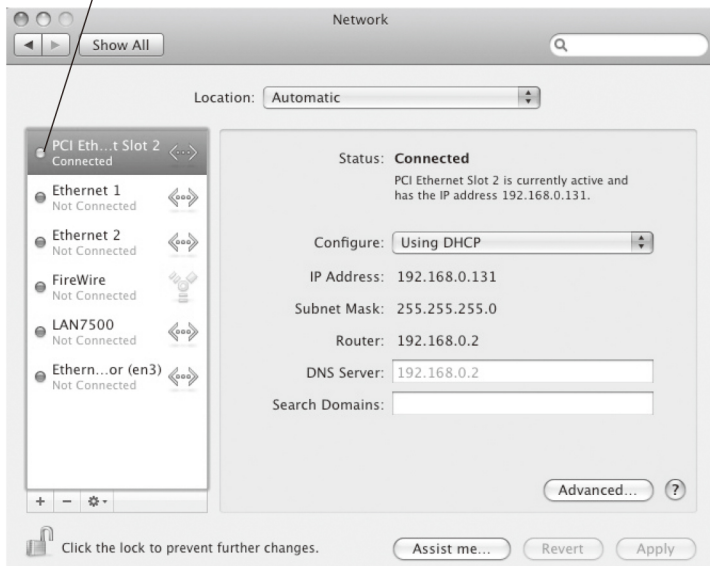


Figure 2